



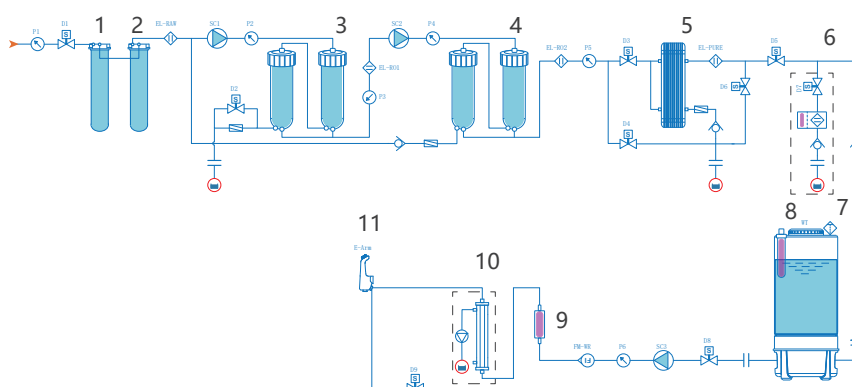
Noble E60/Noble E100

Unique features

- ASTM Type II high purified water system & Clinical laboratory reagent water (CLSI)
- Integrated water dispenser arm
- U-cloud platform for remote monitoring(Wifi module)
- China made EDI self-developed
- USB access port for data logging
- Pure water UV lamp 265nm
- 100L water tank, optional 500/1000/1500/2000/3000L water tank

ASTM Type II Ultra purified water system

Water Flow Chart



1. Pre-guard cartridge C
2. Pre-guard cartridge D
3. First stage RO double membrane
4. Second stage RO double membrane
5. EDI module
6. On-line TOC analyzer
7. Water tank air filter
8. Water tank UV lamp 254nm
9. Pure water UV lamp 265nm
10. Degassing Module
11. Type II water dispenser arm



1. Solenoid Valve
2. Waste liquid
3. Flow meter
4. Pump
5. Check Valve
6. Wastewater ratio
7. Inter-module interface
8. Pressure sensors
9. Electrode
10. Air filter
11. Pure water UV lamp
12. Purification cartridge
13. Ultrapure Water Upgrade Module
14. RO Membrane
15. On-line TOC analyzer
16. EDI Module
17. Degassing Module
18. Pure Water Tank
19. Water tank UV lamp
20. Optional Function

Noble



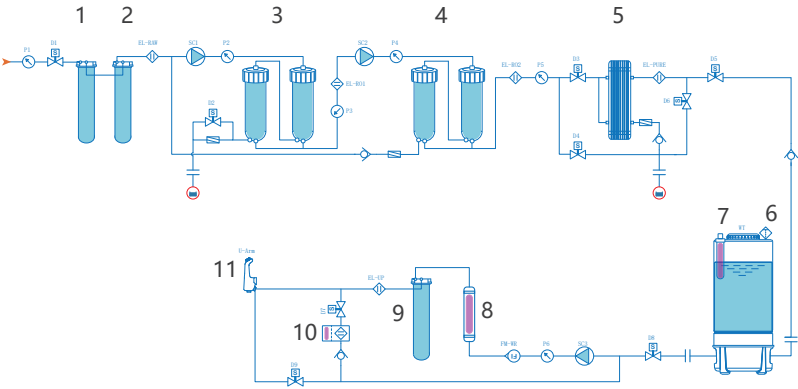
Noble EU60/Noble EU100

Unique features

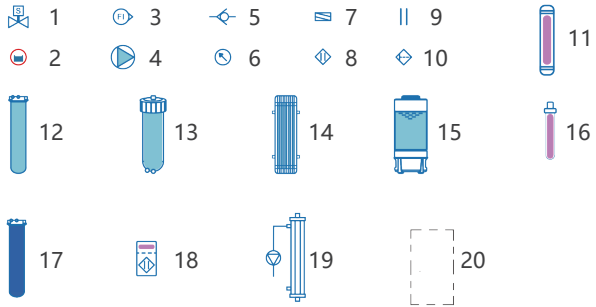
All-in-one system

- All-in-one system for ASTM Type I & Type II water/Clinical laboratory reagent water (CLSI)
- Integrated water dispenser arm
- On line real time TOC monitoring
- Dual wavelength UV lamp 254nm & 185nm
- China made EDI self-developed
- U-cloud platform for remote monitoring (Wifi module)
- USB access port for data logging
- 100L water tank, optional 500/1000/1500/2000/3000L water tank

Water Flow Chart



1. Pre-guard cartridge C
2. Pre-guard cartridge D
3. First stage RO double membrane
4. Second stage RO double membrane
5. EDI module
6. Water tank air filter
7. Water tank UV lamp 254nm
8. Dual wavelength UV lamp, 185&254nm
9. Ultra purification cartridge
10. On-line TOC analyzer
11. Type I water dispenser arm



1. Solenoid Valve
2. Waste liquid
3. Flow meter
4. Pump
5. Check Valve
6. Wastewater ratio
7. Inter-module interface
8. Pressure sensors
9. Electrode
10. Air filter
11. Pure water UV lamp
12. Pre-guard cartridge
13. Ultrapure Water Upgrade Module
14. RO Membrane
15. On-line TOC analyzer
16. EDI Module
17. Degassing Module
18. Pure Water Tank
19. Water tank UV lamp
20. Optional Function

Main configuration	Type II water		All-in-one system	
	Noble E60	Noble E100	Noble EU60	Noble EU100
Pre-guard cartridge C	Yes		Yes	
Pre-guard cartridge D	Yes		Yes	
Two-stage Reverse osmosis	Yes		Yes	
EDI module self-developed	Yes		Yes	
100L Water tank;stepless water level sensor	Yes		Yes	
254nm UV light of water tank	Yes		Yes	
Inlet air filter of water tank 0.2um	Yes		Yes	
Water leakage protection sensor	Yes		Yes	
Dual wavelength (254 nm& 185 nm)UV-lamp	No		Yes	
Pure water UV lamp (254 nm)	Yes		No	
Ultra purification cartridge	No		Yes	
One integrated water dispenser arm	Yes		Yes	
1M water piping from main unit to water dispenser arm	Yes		Yes	
0.22 μm end filter	Yes		Yes	
On-line TOC analyzer	Optional		Yes	
Degassing Module	Optional		No	
Ultrapure Water Upgrade Module	No		Yes	

Model	Type II water		All-in-one system	
	Noble E60	Noble E100	Noble EU60	Noble EU100
Feed water requirements				
Source	Potable tap water			
Water inlet pressure	0.1-0.4MPa			
Water inlet conductivity	<2000uS/cm			
Water inlet TOC	<1ppm			
Hardness*	< 300 ppm			
Ambient temperature	4-45°C			
PH	4-10			
Type II high purified water				
Resistivity at 25 °C **	≥5 MΩ.cm		≥5 MΩ.cm	
Conductivity at 25 °C **	≤ 0.2 uS/cm		≤ 0.2 uS/cm	
TOC (Total Organic Carbon)	<30 ppb(μg/L)		<30 ppb(μg/L)	
Particles (>0.2μm particles) ***	<1 /mL		<1 /mL	
Microorganism ***	< 1 cfu/mL		< 1 cfu/mL	
RO rejection	97-98%		97-98%	
EDI ion rejection	≥99%		≥99%	
Production flow rate	60 L/H	100 L/H	60 L/H	100 L/H
Manual control water flow rate	2 L/min		2 L/min	
RO rejection	97-98%		97-98%	
Organic rejection	≥99%		≥99%	
Type I ultra purified water				
Electrical resistivity	N/A		18.2 MΩ.cm@25°C	
TOC (Total Organic Carbon)			<5 ppb ^[1]	
Particles (>0.2μm particles)			<1 /mL	
Microorganism			<0.01 CFU/mL	
Pyrogen			<0.001 EU/mL	
Rnase			<0.4 pg/mL	
Dnase			<2 pg/mL	
Flow rate			1L/min	
Electrical requirement				
Input voltage	100-240 V/50-60 Hz/AC		100-240 V/50-60 Hz/AC	
Rated power	120 W		120 W	
Size information				
Dimensions (width × depth × height)	Main host: 350×640×650 mm		Main host: 350×640×650 mm	
Main host weight	12 kg		17 kg	

* If the tap water contains a high rate of calcium ions and magnesium ion which do not meet the requirement, please use salty box to remove part of calcium ions and magnesium ion in advance

** Resistivity typically 10-15MΩ.cm at 25 °C , Conductivity typically 0.1μS/cm, at 25 °C

*** Feed water quality should meet above requirements and purified water through the remote water dispenser with end filter